

40 CPR Quadrature Encoder

Getting Started

Checking the Contents



You should have received:

- Plastic encoder cap and base
- Plastic encoder disk
- Encoder PCB
- Two 8mm screws
- Two 6mm screws
- 3035 - Encoder Cable

In order to test your new Phidget you will also need:

- A motor with a rear shaft and compatible mounting holes
- A motor controller Phidget
- A Phidget with an encoder input

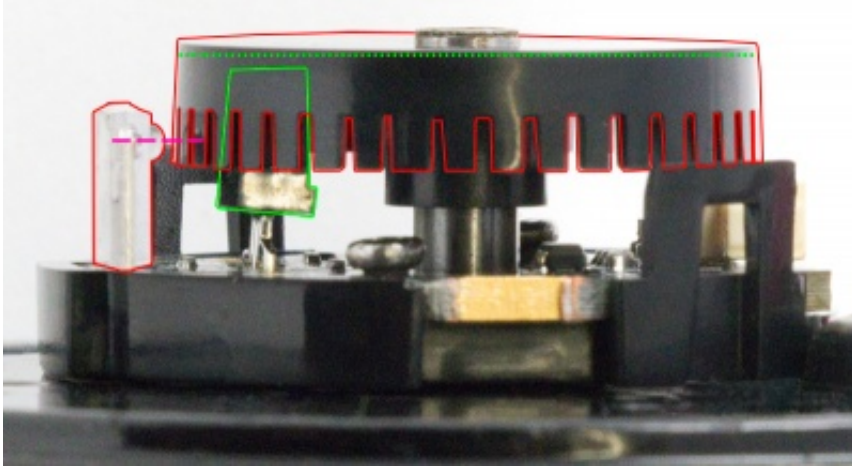
Connecting the Pieces

Take the plastic base, the encoder PCB, and two screws. Use the longer 8mm screws if they fit your motor, or the 6mm screws if those are too long. Place the PCB inside the base in the orientation shown above so that it fits in. Place the combined base and PCB on the back of the motor such that the mounting holes line up with the holes in the base. There are two orientations possible- use whichever is more convenient for motor wiring. Place the screws in the two holes in the PCB and screw until the base and PCB are firmly attached, being careful not to over-tighten and damage the pieces.

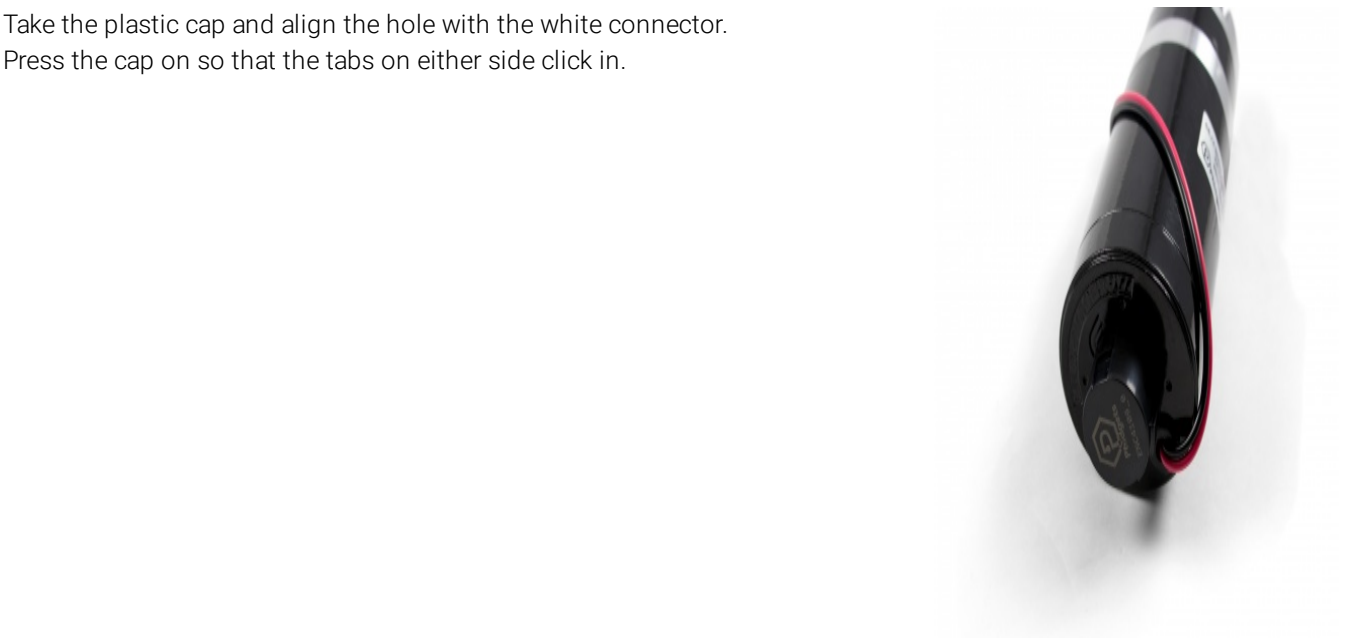


Take the plastic encoder wheel and place it on the shaft with the comb-shaped edge facing the motor. Slowly slide the wheel onto the shaft until the combs are aligned with the bubble on the optical sensor (Outlined in red below). Be careful not to push so far that the wheel is

contacting components on the PCB (outlined in green below).



Take the plastic cap and align the hole with the white connector.
Press the cap on so that the tabs on either side click in.



Attach the cable to the white connector. You may need to push on
either side with your fingernail or a screwdriver to ensure that it's
fully inserted.



For further instructions, visit the user guide for the motor controller and encoder interface Phidget that you're using.