

Distance Phidget

Contents

1 GETTING STARTED

2 USING THE DST1200

2.1 Phidget Control Panel

2.1.1 Windows

2.1.2 macOS

2.2 First Look

2.3 Distance Sensor

3 TECHNICAL DETAILS

3.1 Out-of-Range Error

4 WHAT TO DO NEXT

Getting Started

Welcome to the DST1000 user guide! In order to get started, make sure you have the following hardware on hand:

- DST1000 - Distance Phidget
- VINT Hub
- Phidget cable
- USB cable and computer

Next, you will need to connect the pieces:



1. Connect the DST1000 to the VINT Hub using the Phidget cable.
2. Connect the VINT Hub to your computer with a USB cable.

Now that you have everything together, let's start using the DST1000!

Using the DST1200

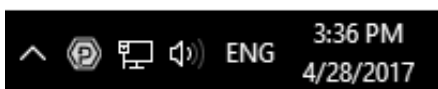
Phidget Control Panel

In order to demonstrate the functionality of the DST1000, the Phidget Control Panel running on a Windows machine will be used.


The Phidget Control Panel is available for use on both macOS and Windows machines.

Windows

To open the Phidget Control Panel on Windows, find the  icon in the taskbar. If it is not there, open up the start menu and search for Phidget Control Panel



macOS

To open the Phidget Control Panel on macOS, open Finder and navigate to the Phidget Control Panel in the Applications list. Double click on the  icon to bring up the Phidget Control Panel.

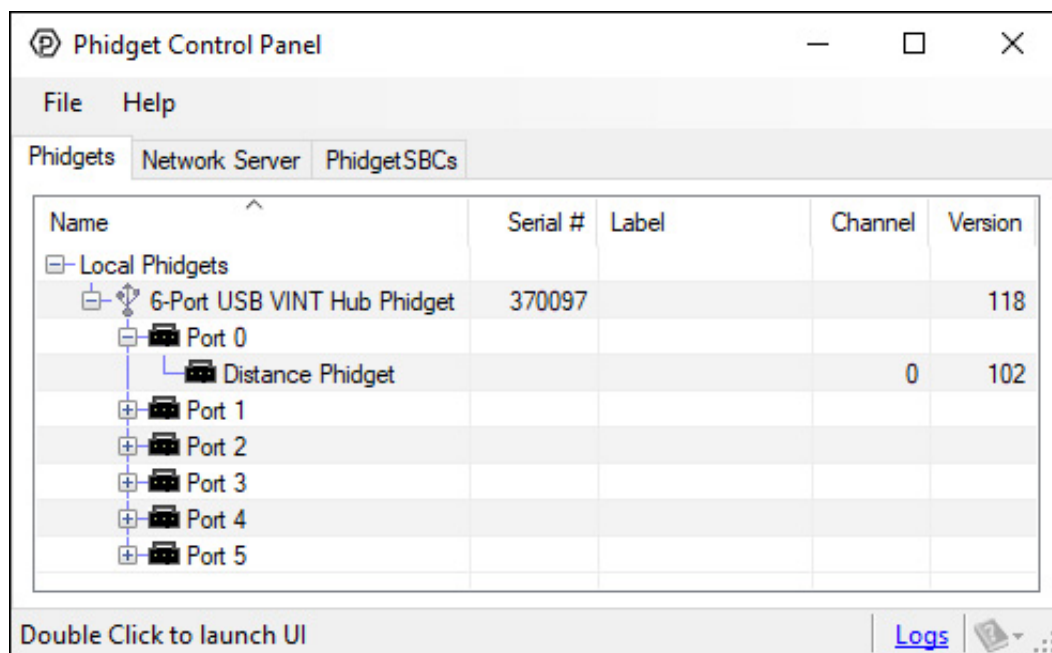
For more information, take a look at the getting started guide for your operating system:

- Getting started with Windows
- Getting started with macOS

Linux users can follow the getting started with Linux guide and continue reading here for more information about the DST1000.

First Look

After plugging the DST1000 into your computer and opening the Phidget Control Panel, you will see something like this:



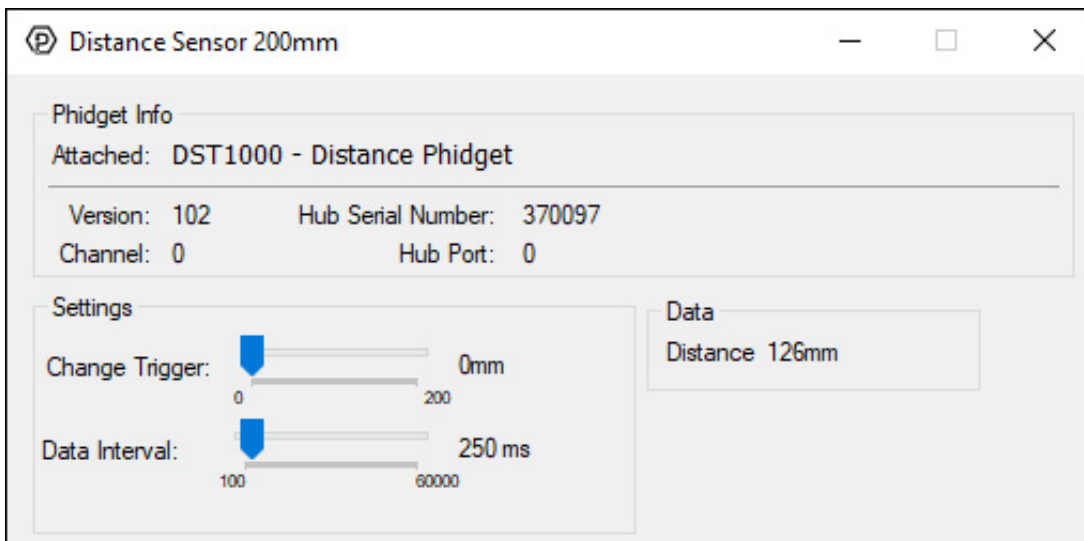
The Phidget Control Panel will list all connected Phidgets and associated objects, as well as the following information:

- **Serial number:** allows you to differentiate between similar Phidgets.
- **Channel:** allows you to differentiate between similar objects on a Phidget.
- **Version number:** corresponds to the firmware version your Phidget is running. If your Phidget is listed in red, your firmware is out of date. Update the firmware by double-clicking the entry.

The Phidget Control Panel can also be used to test your device. Double-clicking on an object will open an example.

Distance Sensor

Double-click on the Distance Sensor object in order to run the example:



General information about the selected object will be displayed at the top of the window. You can also experiment with the following functionality:

- Read the distance in millimetres on the right
- Move the change trigger slider to select the minimum change required to register a new distance
- Move the data interval slider to change how fast data events come in

Technical Details

Out-of-Range Error

The DST1000 will fire out-of-range error events when the reflected IR light doesn't reach the sensor, meaning the object is out of range. Objects that do not reflect light well might be harder to detect at greater distances.

What to do Next

- Software Overview - Find your preferred programming language here to learn how to write your own code with Phidgets!
- General Phidget Programming - Read this general guide to the various aspects of programming with Phidgets. Learn how to log data into a spreadsheet, use Phidgets over the network, and much more.
- Phidget22 API - The API is a universal library of all functions and definitions for programming with Phidgets. Just select your language and device and it'll give you a complete list of all properties, methods, events, and enumerations that are at your disposal.